

# Comfy UI

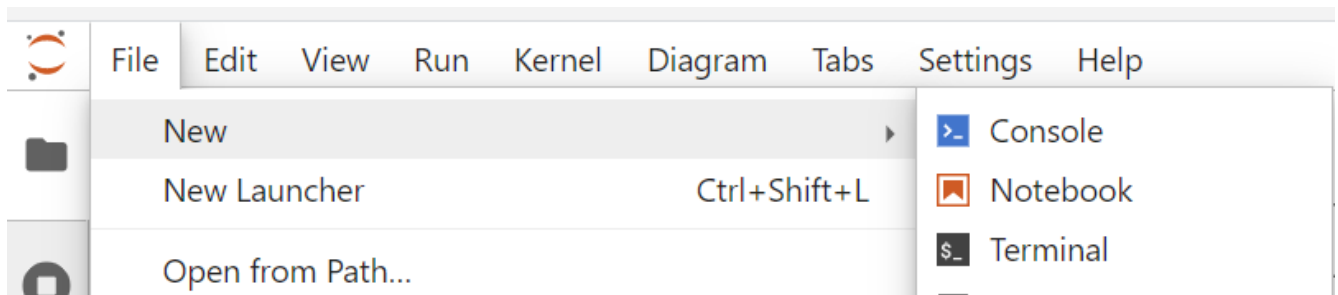
Introduction to Comfy UI

- [Installation: ComfyUI on KITEGG Server](#)
- [Desktop App Installation](#)

# Installation: ComfyUI on KITEGG Server

## 1. Clone ComfyUI GitHub Repository

1. Open a terminal



2. Download the ComfyUI repository

In Terminal, run this command:

```
git clone https://github.com/comfyanonymous/ComfyUI
```

3. Navigate to the "custom\_nodes" folder and download the ComfyUI Manager

In Terminal, run these commands (one after the other):

```
cd ComfyUI/custom_nodes
```

```
git clone https://github.com/ltdrdata/ComfyUI-Manager
```

## 2. Run ComfyUI

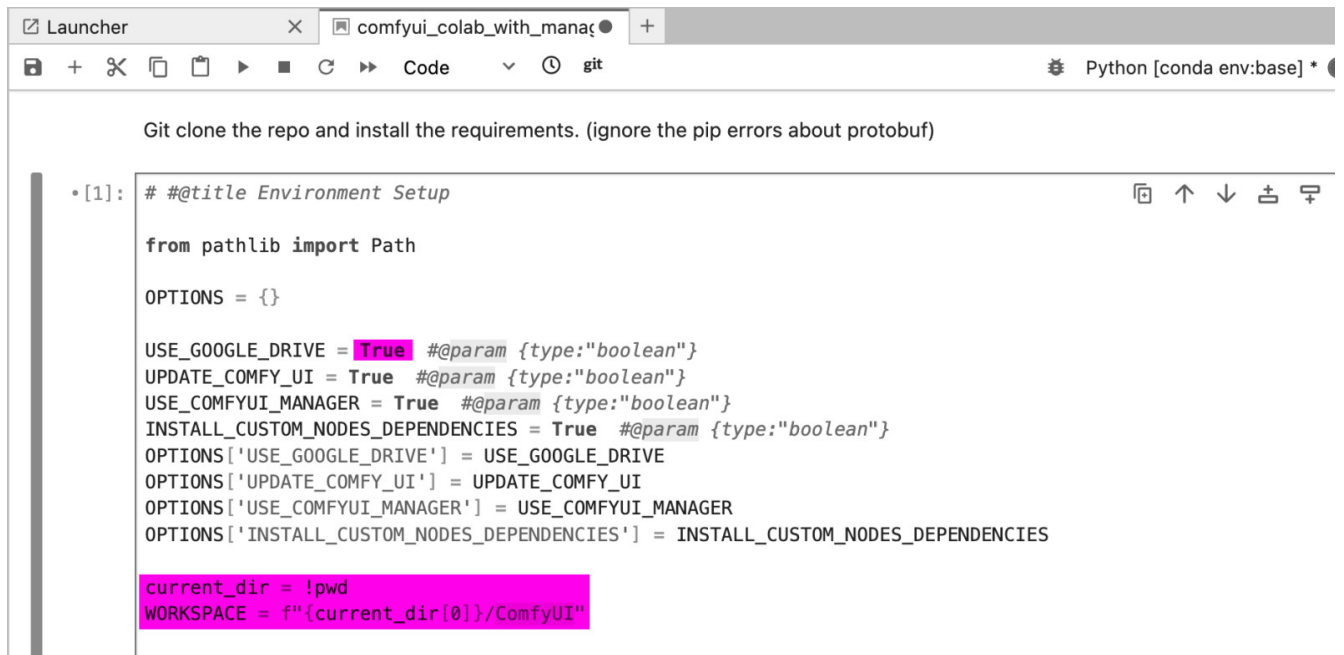
### 2.1. Adapt Notebook for running it on the KITEGG Server

1. Navigate to the ComfyUI Manager notebook and open the Notebook

"comfyui\_colab\_with\_manager.ipynb"

Path: ComfyUI/custom\_nodes/ComfyUI-Manager/notebooks/comfyui\_colab\_with\_manager.ipynb

2. Make following changes to the notebook (pink Markups are going to be changed):



```
Git clone the repo and install the requirements. (ignore the pip errors about protobuf)

•[1]: # #@title Environment Setup

from pathlib import Path

OPTIONS = {}

USE_GOOGLE_DRIVE = True #@param {type:"boolean"}
UPDATE_COMFY_UI = True #@param {type:"boolean"}
USE_COMFYUI_MANAGER = True #@param {type:"boolean"}
INSTALL_CUSTOM_NODES_DEPENDENCIES = True #@param {type:"boolean"}
OPTIONS['USE_GOOGLE_DRIVE'] = USE_GOOGLE_DRIVE
OPTIONS['UPDATE_COMFY_UI'] = UPDATE_COMFY_UI
OPTIONS['USE_COMFYUI_MANAGER'] = USE_COMFYUI_MANAGER
OPTIONS['INSTALL_CUSTOM_NODES_DEPENDENCIES'] = INSTALL_CUSTOM_NODES_DEPENDENCIES

current_dir = !pwd
WORKSPACE = f"{current_dir[0]}/ComfyUI"
```

a) Disable Google Drive Connection (Set USE\_GOOGLE\_DRIVE = "False")

Delete: `USE_GOOGLE_DRIVE = True #@param {type:"boolean"}`

Paste: `USE_GOOGLE_DRIVE = False #@param {type:"boolean"}`

b) Change Workspace Location (Set WORKSPACE = '~/ComfyUI')

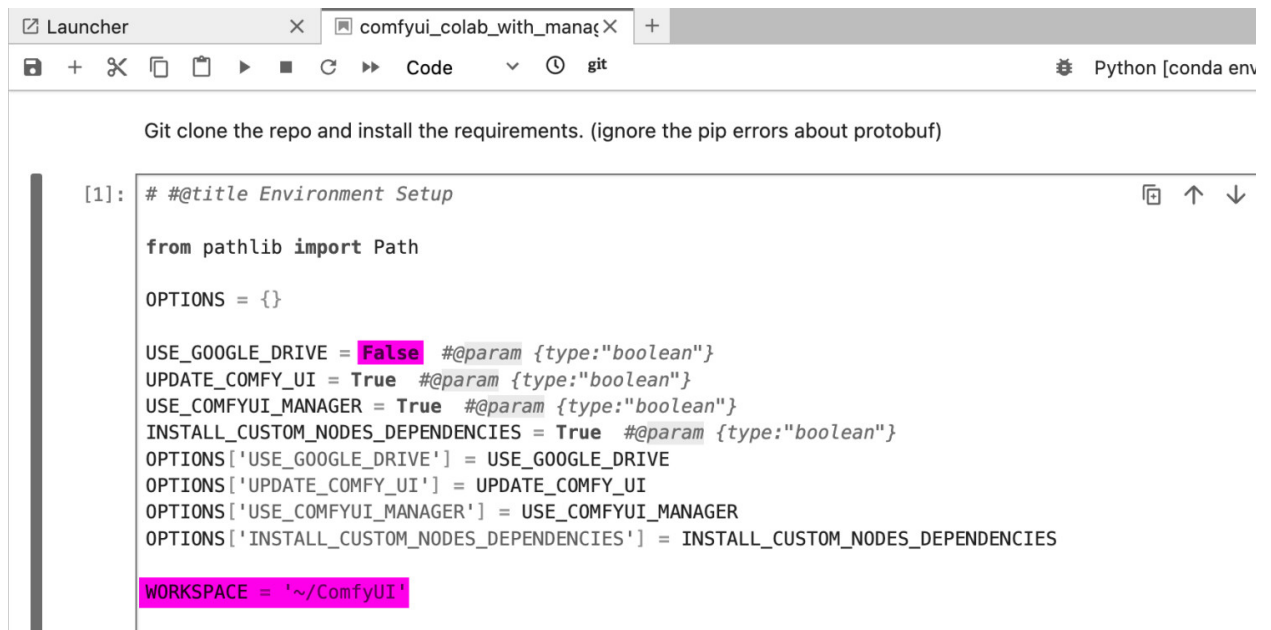
Delete: `current_dir = !pwd`

Delete: `WORKSPACE = f"{current_dir[0]}/ComfyUI"`

Paste: `WORKSPACE = '~/ComfyUI'`

3. Check and Run

a) Make sure the code looks like this:



```
Git clone the repo and install the requirements. (ignore the pip errors about protobuf)

[1]: #@title Environment Setup

from pathlib import Path

OPTIONS = {}

USE_GOOGLE_DRIVE = False #@param {type:"boolean"}
UPDATE_COMFY_UI = True #@param {type:"boolean"}
USE_COMFYUI_MANAGER = True #@param {type:"boolean"}
INSTALL_CUSTOM_NODES_DEPENDENCIES = True #@param {type:"boolean"}
OPTIONS['USE_GOOGLE_DRIVE'] = USE_GOOGLE_DRIVE
OPTIONS['UPDATE_COMFY_UI'] = UPDATE_COMFY_UI
OPTIONS['USE_COMFYUI_MANAGER'] = USE_COMFYUI_MANAGER
OPTIONS['INSTALL_CUSTOM_NODES_DEPENDENCIES'] = INSTALL_CUSTOM_NODES_DEPENDENCIES

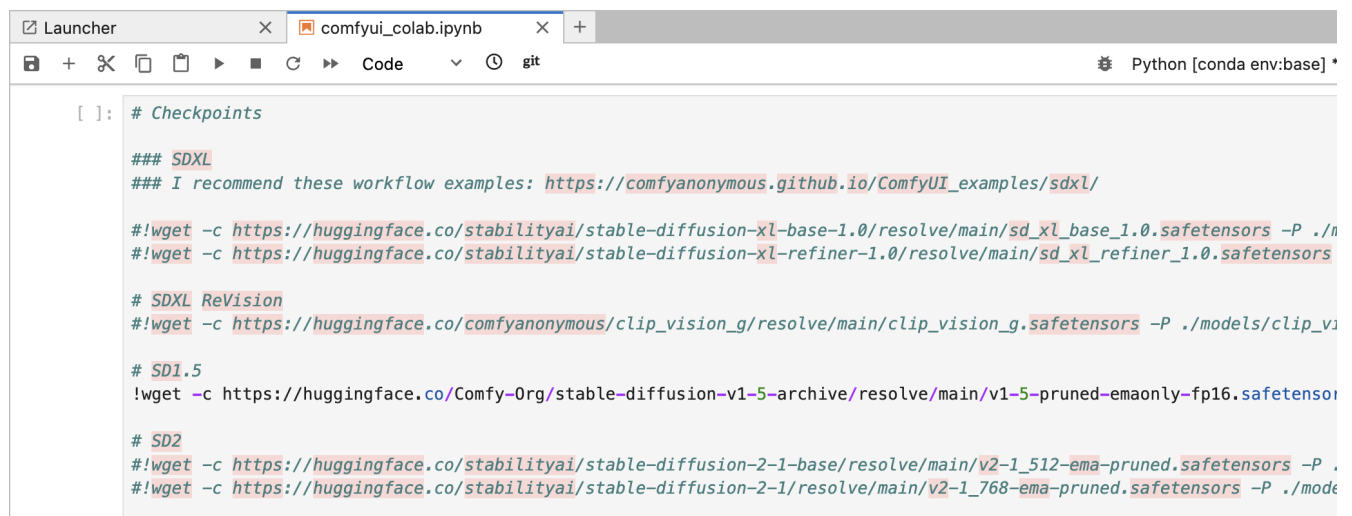
WORKSPACE = '~/ComfyUI'
```

b) save the notebook changes ⌘S

c) run the cell ↵

## 2.2. Install Models

1. Go to the Second Cell



```
[ ]: # Checkpoints

### SDXL
### I recommend these workflow examples: https://comfyanonymous.github.io/ComfyUI_examples/sdxl/

#!wget -c https://huggingface.co/stabilityai/stable-diffusion-xl-base-1.0/resolve/main/sd_xl_base_1.0.safetensors -P ./models
#!wget -c https://huggingface.co/stabilityai/stable-diffusion-xl-refiner-1.0/resolve/main/sd_xl_refiner_1.0.safetensors -P ./models

# SDXL ReVision
#!wget -c https://huggingface.co/comfyanonymous/clip_vision_g/resolve/main/clip_vision_g.safetensors -P ./models/clip_vision_g

# SD1.5
!wget -c https://huggingface.co/Comfy-Org/stable-diffusion-v1-5-archive/resolve/main/v1-5-pruned-emaonly-fp16.safetensors -P ./models

# SD2
#!wget -c https://huggingface.co/stabilityai/stable-diffusion-2-1-base/resolve/main/v2-1_512-ema-pruned.safetensors -P ./models
#!wget -c https://huggingface.co/stabilityai/stable-diffusion-2-1/resolve/main/v2-1_768-ema-pruned.safetensors -P ./models
```

2. Uncomment the models you want to install (delete the "#" in front of the lines)

you can always install more models later

3. run the cell ↵

## 2.3. Install ControlNet Preprocessor

open Terminal, paste and run code:

```
cd ComfyUI/custom_nodes/
```

```
git clone https://github.com/Fannovel16/comfyui_controlnet_aux/
```

```
cd comfyui_controlnet_aux
```

```
pip install -r requirements.txt
```

if this does not work, check for updates in the Installation guide at [GitHub - Fannovel16/comfyui\\_controlnet\\_aux: ComfyUI's ControlNet Auxiliary Preprocessors](#)

## 2.4. Open Comfy UI

0. (If you did 2.4.: Go back to the Notebook)

1. Run the last cell "ComfyUI with cloudflared"

2. In the terminal code, search for the `URL to access ComfyUI` (<https://xxxx-xxxxx-xxxx.trycloudflare.com>) and copy it to your browser.

## 3. Always stop your server (important)!

At end of use, please do not forget to stop your server. It uses a lot of energy. Thanks:)

To do so go to `File > Hub Control Panel > Stop My Server`

## Hints

### Opening ComfyUI after initial installation

(no Terminal needed)

1. Open the Notebook like before

Path: `ComfyUI/custom_nodes/ComfyUI-Manager/notebooks/comfyui_colab_with_manager.ipynb`

2. **Run All Three Cells** (wait for Processes to complete before running next cell)  
add more models by uncommenting them in the 2nd cell if you like

3. In the terminal code of the last cell, search for the `URL to access ComfyUI` (<https://xxxx-xxxxx-xxxx.trycloudflare.com>) and copy it to your browser.

# Tutorial Recommendations

- (Links zu unseren Tutorials)
- (Links zu unseren Tutorials)
- (Links zu unseren Tutorials)
- [https://www.youtube.com/watch?v=LN0Ik8oz1nY&list=PLH1tkjphTIWUTApzX-Hmw\\_WykUpG13eza](https://www.youtube.com/watch?v=LN0Ik8oz1nY&list=PLH1tkjphTIWUTApzX-Hmw_WykUpG13eza)

Tutorial recommendation: [Olivio Sarikas - Learn ComfyUI Playlist \(1 - 8\)](#)

# Desktop App Installation

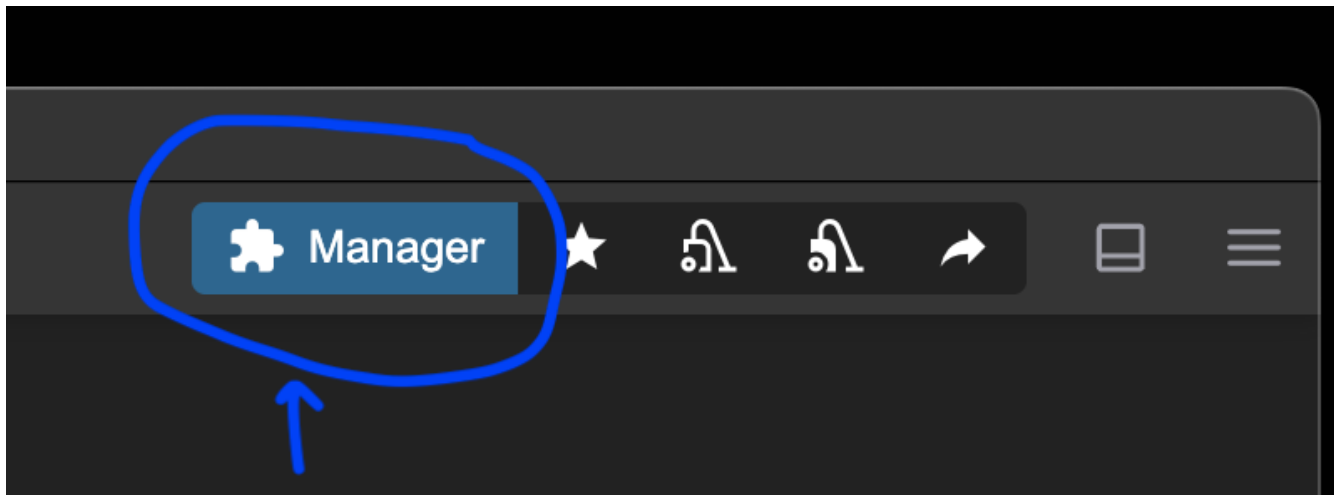
## 1. Download and Install App

<https://www.comfy.org/download>

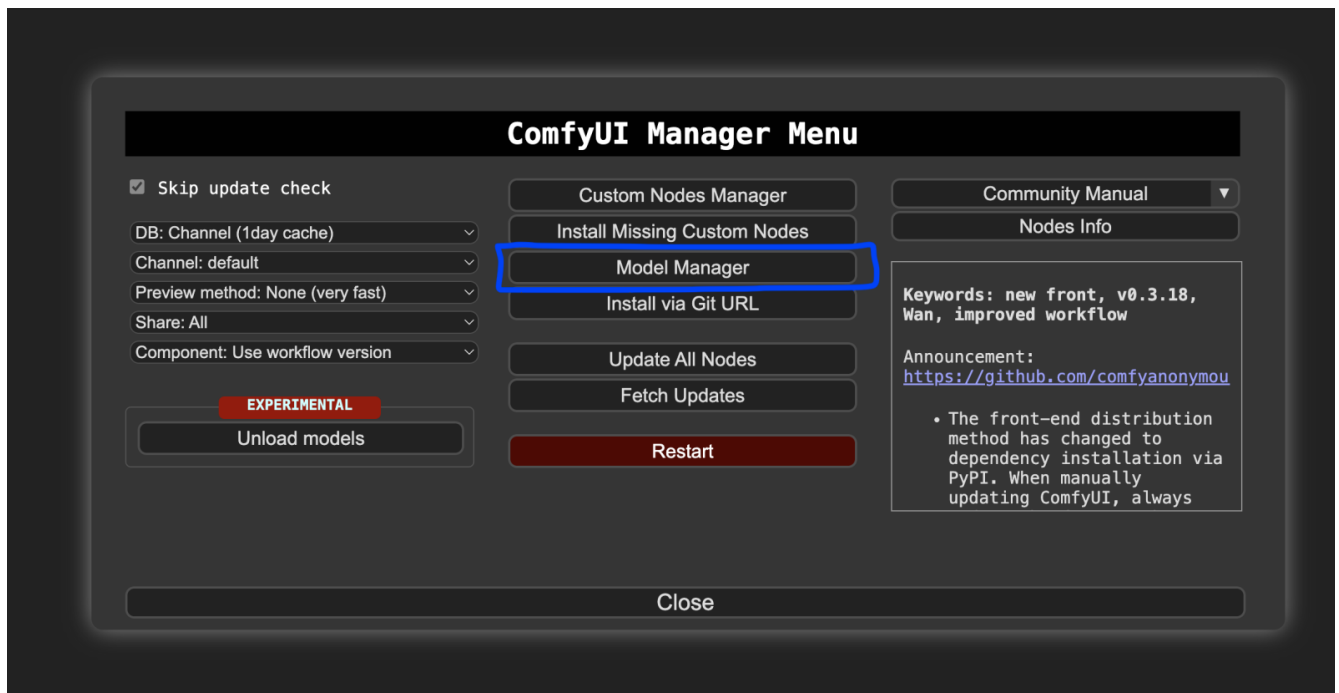
Download the app, follow installation instructions, start Prompting

## 2. Add Models

2.1. Open ComfyUI Manager, go to Model Manager



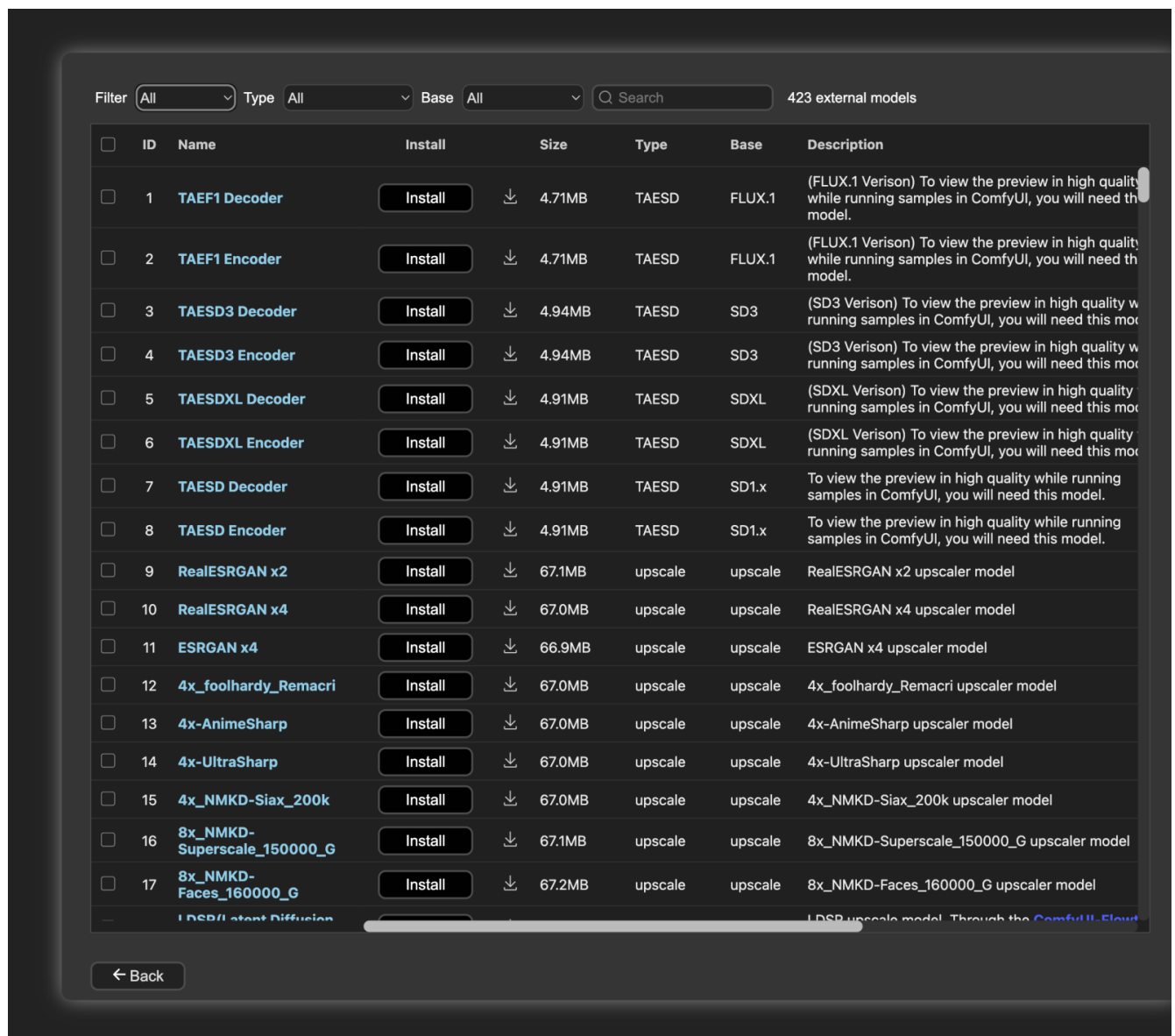
In the top right corner of the app window click "Manager".



Open the Model Manager

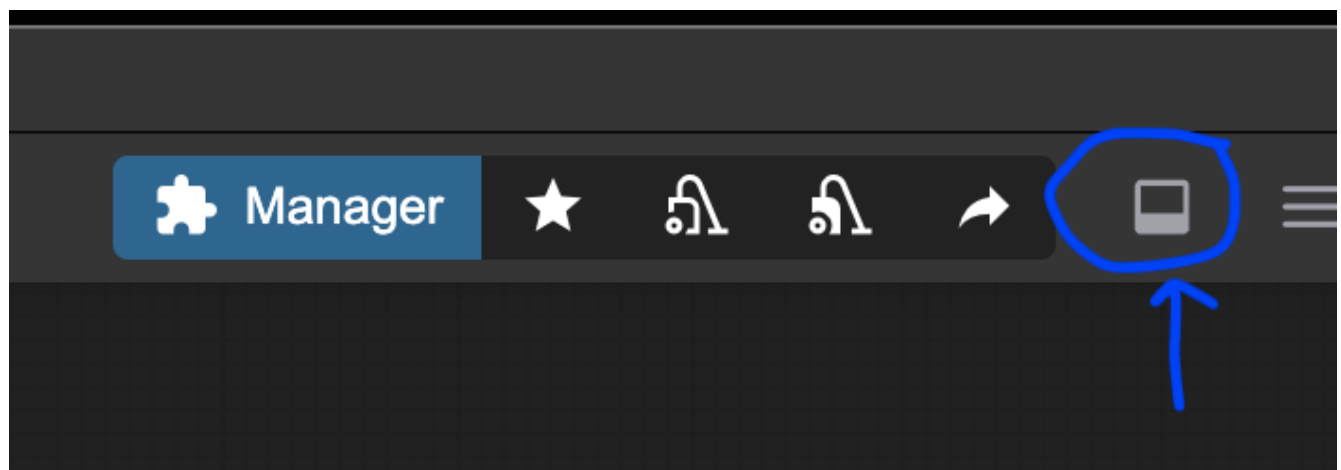
2.2. Install Model, then Click Refresh and Restart the App

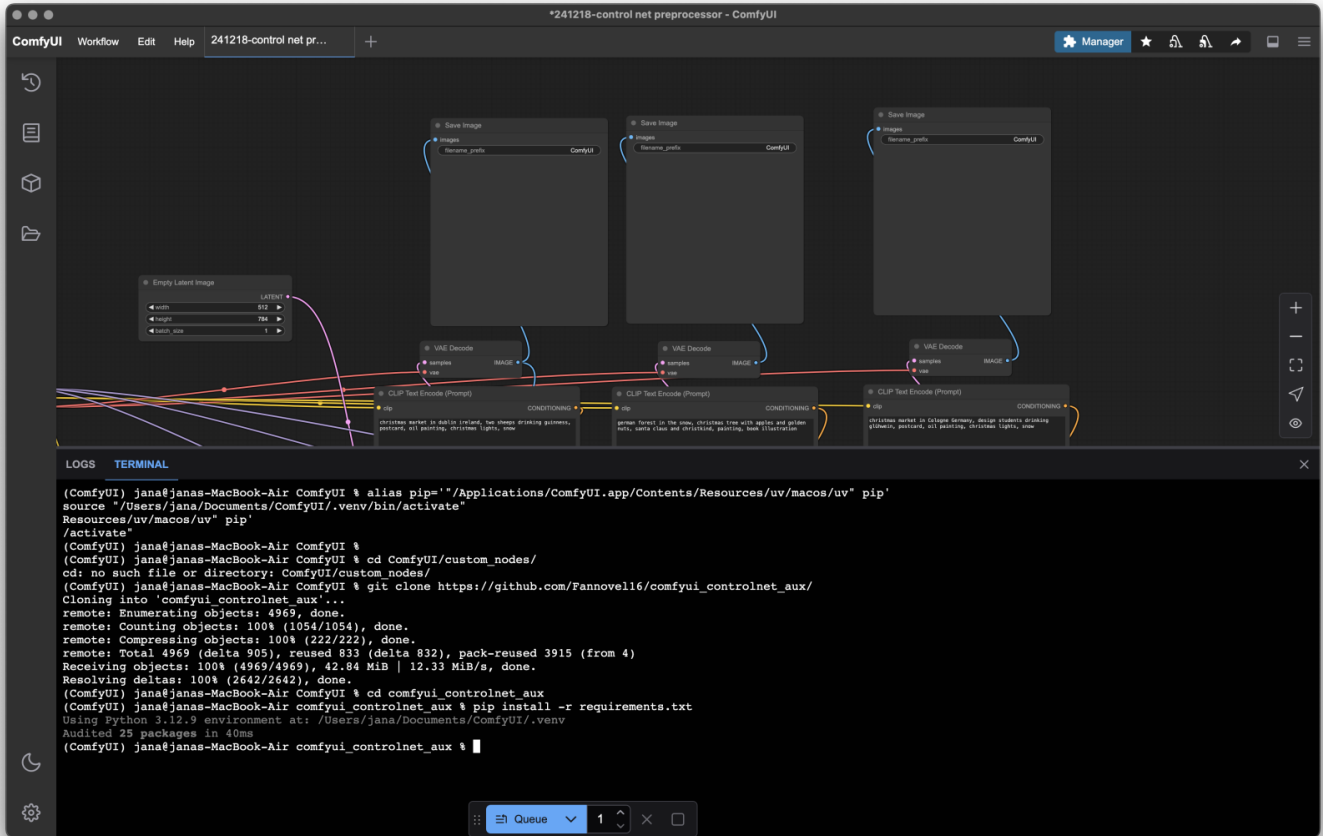




## 3. Install Control Net Preprocessor

### 3.1. Open In-App-Terminal





### 3.2. paste and run code:

```
pip install -r requirements.txt
```

```
cd comfyui_controlnet_aux
```

```
git clone <https://github.com/Fannovel16/comfyui_controlnet_aux/>
```

```
cd ComfyUI/custom_nodes/
```