

Desktop App Installation

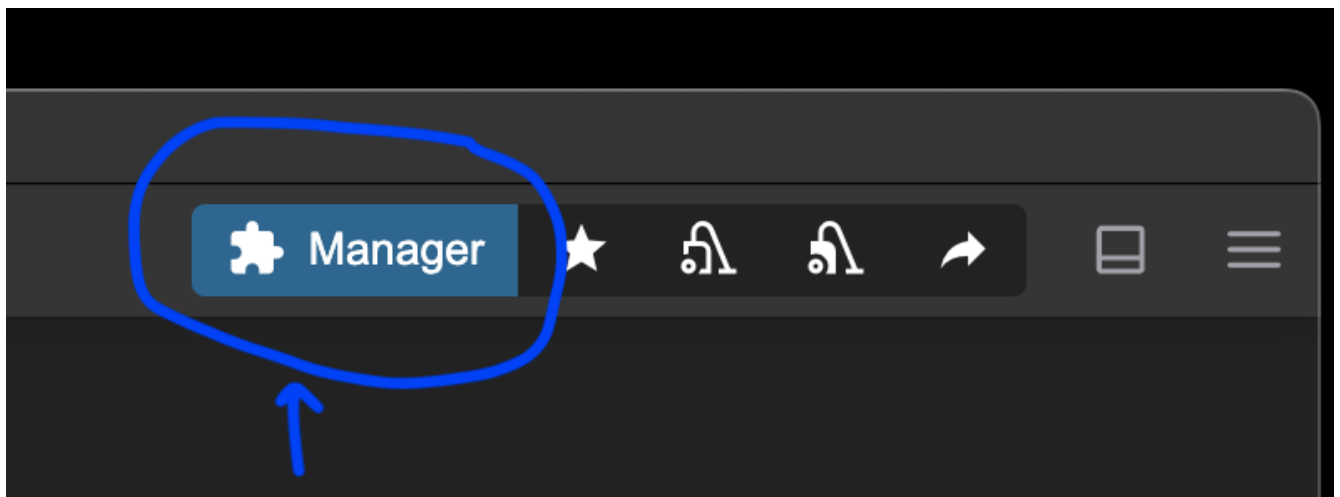
1. Download and Install App

<https://www.comfy.org/download>

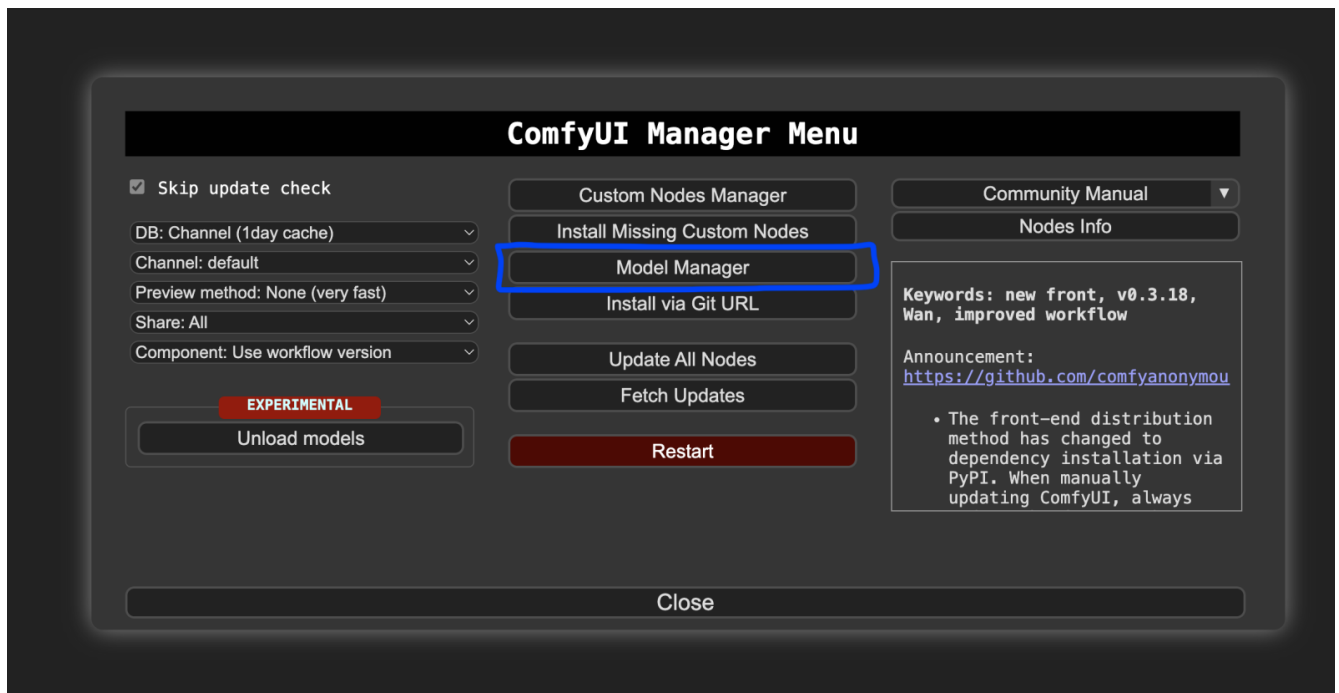
Download the app, follow installation instructions, start Prompting

2. Add Models

2.1. Open ComfyUI Manager, go to Model Manager

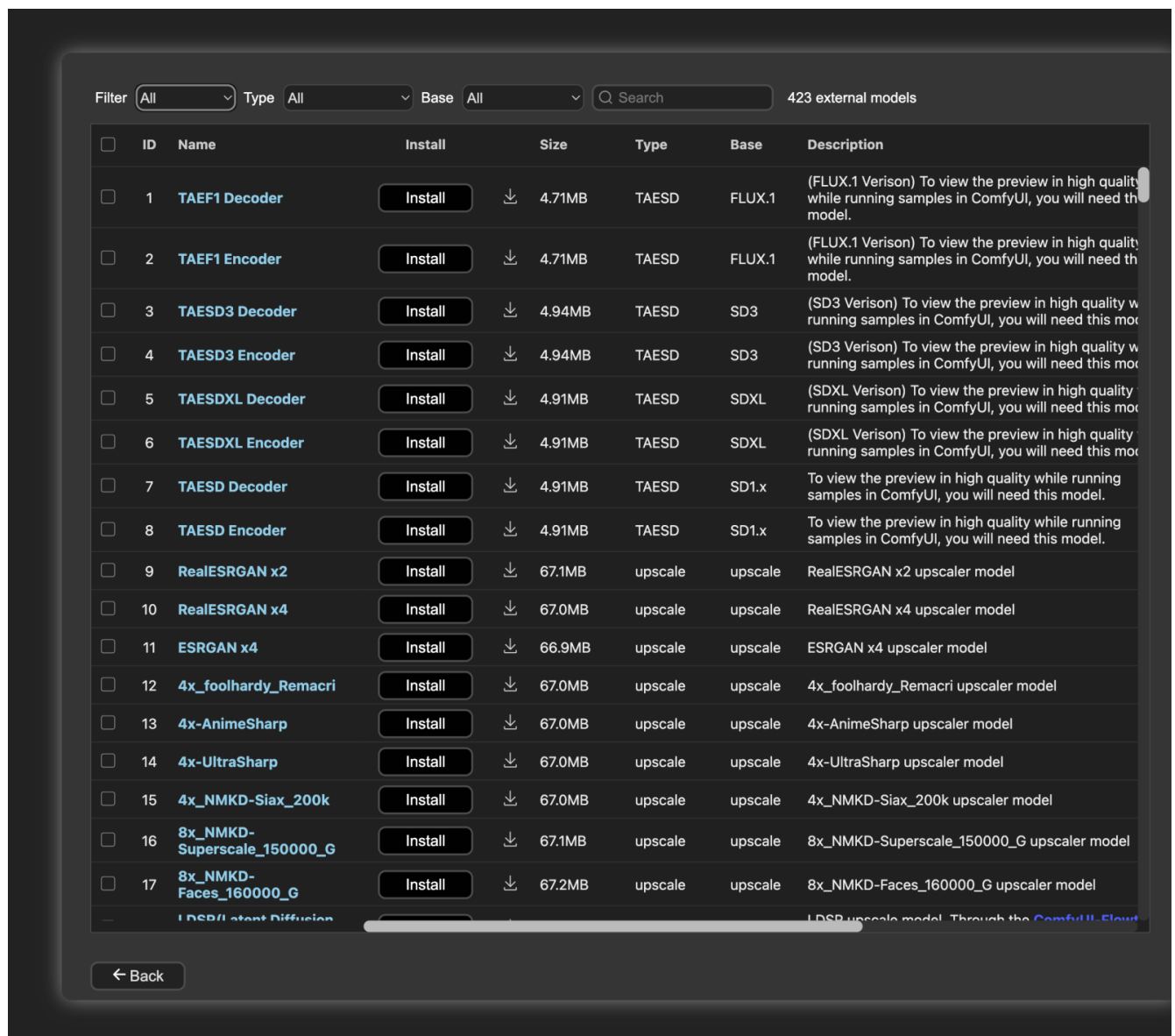


In the top right corner of the app window click "Manager".



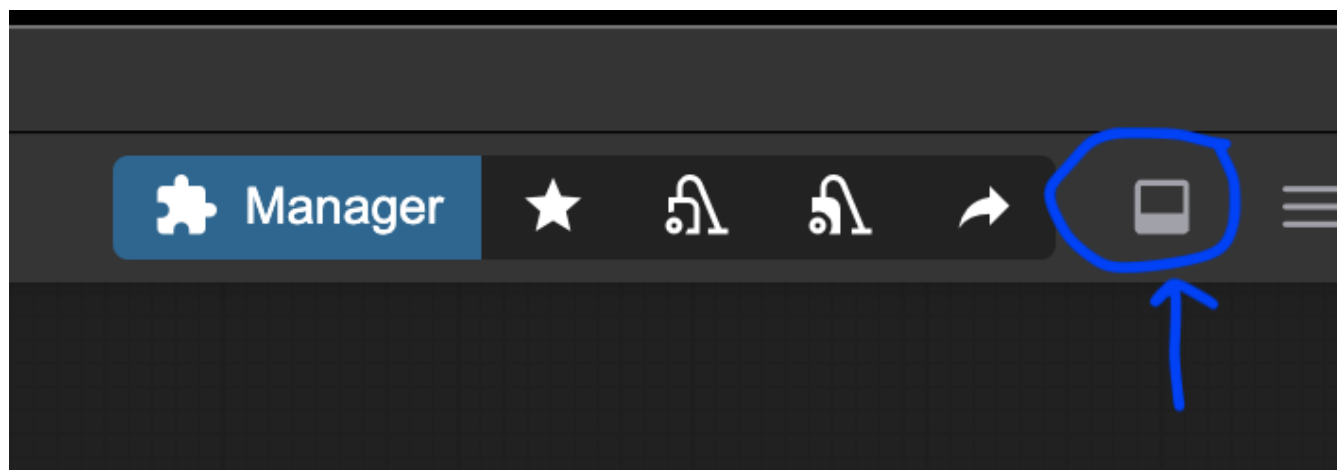
Open the Model Manager

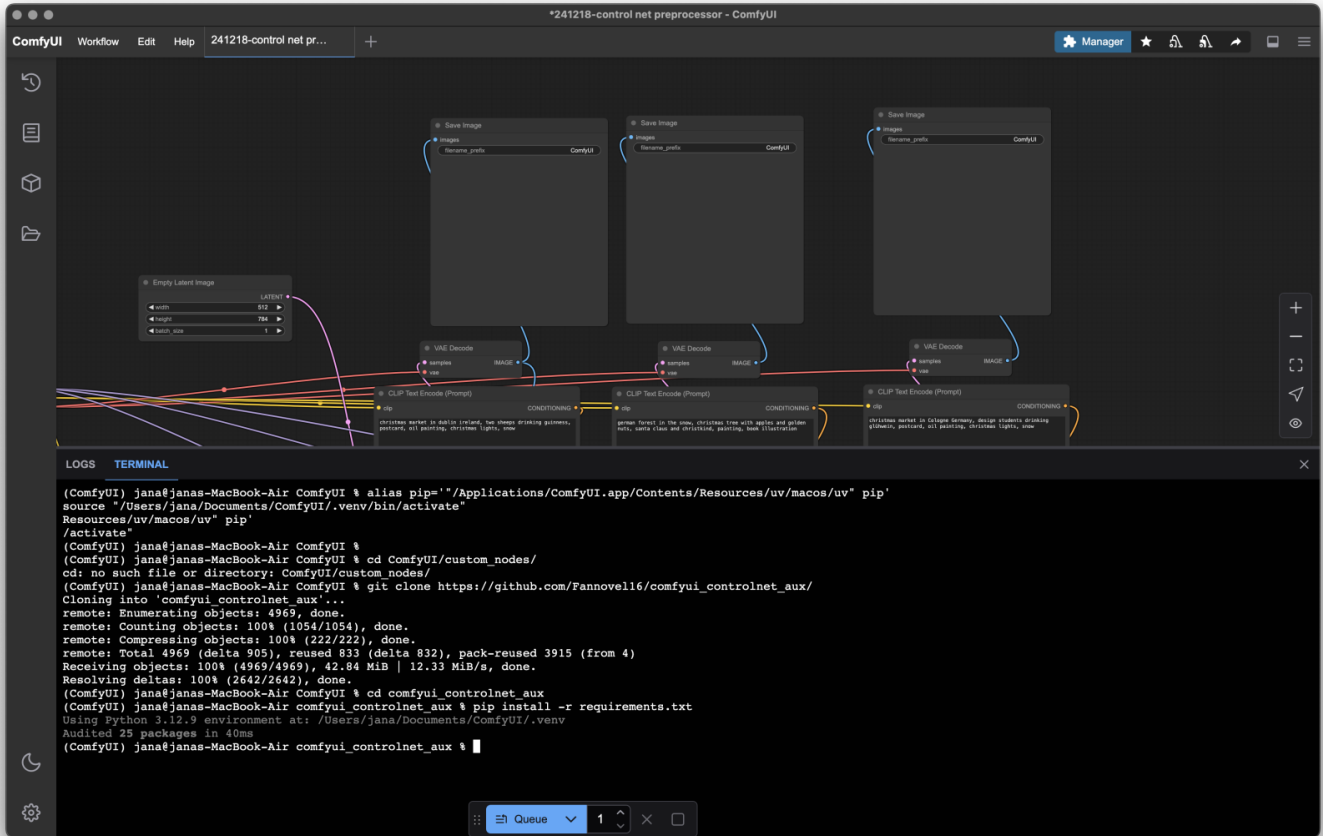
2.2. Install Model, then Click Refresh and Restart the App



3. Install Control Net Preprocessor

3.1. Open In-App-Terminal





3.2. paste and run code:

```
pip install -r requirements.txt
```

```
cd comfyui_controlnet_aux
```

```
git clone <https://github.com/Fannovel16/comfyui_controlnet_aux/>
```

```
cd ComfyUI/custom_nodes/
```

Revision #3

Created 12 March 2025 12:34:12 by Jana Hartmann

Updated 12 March 2025 12:41:38 by Jana Hartmann